

Monthly Weather Summary in Thailand December 2017

The continuation of high pressure area from China which extended to cover upper Thailand throughout the month caused cool weather nearly the whole areas, particularly during 18 – 23 which was the lowest temperature of the month with cold weather in almost of upper Thailand and very cold weather in some areas of northern and northeastern parts. In the mountainous areas and mountain top, the weather was cold to very cold and some frost area was reported. However, mean monthly temperatures were above normal in every regions. For rainfall, the westerly trough from Myanmar moved to cover the northern and upper northeastern parts of Thailand caused rainfall occurred in upper Thailand mainly during the end of the month. For southern part, due to influence of northeast monsoon which prevailing over the Gulf of Thailand and southern part strengthened during the beginning and the end of the month accompanied with the remnants of 2 tropical cyclones namely “KAI-TAK” (1726) and the typhoon “TEMBIN” (1727), respectively. These conditions caused plentiful rainfall was mainly along east coast nearly the whole month. The average total rainfall over Thailand in this month was about 41% above normal and monthly rainfall was above normal in all parts i.e. northern part 19.8 mm (241%), northeastern part 4.6 mm (131%), central part 23.4 mm (450%), eastern part 10.4 mm (128%), southern part (east coast) 31.0 mm (13%) and southern part (west coast) 47.4 mm (63%).

1 – 10 December: The high pressure area covered upper Thailand and the South China Sea throughout the period, another rather active high pressure area from China extended its ridge to cover the mentioned areas during middle of the period. These caused generally cool weather in northern and northeastern parts nearly the whole period and cold weather in some areas over upper portion with cool weather mainly in the upper portion of central and eastern parts almost the period. The minimum temperature of 14.0 °C was recorded at Agrometeorological Station in Chiang Rai province on December 3 and 5 and 3.3 °C over the area of mountain tops at Kew Mae Pan Amphoe Chom Thong in Chiang Mai province on December 1. For rainfall, unusual rainfall was found in upper Thailand with heavy rainfall in some areas mainly in northern part during late period, the maximum daily rainfall of 36.5 mm at Amphoe Mueang in Chiang Rai province on December 9. Rainfall in southern part was enhanced by the low pressure cell cover the lower Andaman Sea and Sumatra Island during early period couple with the northeast monsoon that prevailed over the Gulf of Thailand and southern part strengthened since middle of the period, which initiated cool weather in several areas and fairly widespread to widespread rain nearly the whole period with heavy rainfall in several areas and very heavy rainfall in some areas mainly along east coast. Flood has continuously occurred from November at Suratthani, Nakhon Si Thammarat, Pattalung, Song Khla, Pattani, Yala, Naratiwat and Trang provinces. The maximum daily rainfall was 450.0 mm at Amphoe Phra Phrom in Nakhon Si Thammarat on December 5.

11 – 20 December: The high pressure areas which covered upper Thailand was weakened during the first half of the period accompanied with the southeasterly wind blew over upper Thailand on December 13 and 14 then another active high pressure area from China

extended its ridge to cover upper Thailand and the South China Sea. Especially during late period, another active high pressure area extend to cover the mentioned areas. These conditions caused generally cool weather over Thailand with cold weather in several places in northern part during the first half of the period and then temperature decreased to cold weather almost the place in upper Thailand, with very cold weather in some areas in northern and northeastern parts during late period. The minimum temperature of the period was 6.0 °C at Agrometeorological Station in Nakhon Phanom province on December 19. In the Mountainous areas and mountain tops, temperature climbed down to -1.0 °C at Doi Intanon in Chiang Mai province on December 20, frost occurred at Doi Intanon in Chiang Mai province and at Phu Hin Rongkla National Park in Phisanulok province on December 19. Isolated rain became in upper Thailand during the first half of the period except for scattered rain with heavy rainfall in some areas in eastern part on December 14 and 15, the maximum daily rainfall of 49.0 mm at Amphoe Wang Chan in Rayong province on December 14. In southern part, decreased rainfall from last period and isolated rain nearly the whole period with heavy to very heavy rainfall on some place during middle of the period effected by the prevailing of the moderate northeast monsoon over the Gulf of the Thailand and southern part almost the period. The maximum daily rainfall of 123.8 mm at Amphoe Chaloem Phra Kiat in Nakhon Si Thammarat on December 17.

21 – 31 December: During early period, cold weather continued occurrence in upper Thailand with very cold weather of some areas in northern and northeastern parts during early period. After that, the active high pressure area which covered upper Thailand and the South China Sea weakened and another rather active high pressure areas from China extended its ridge to cover the mentioned areas during the second half of the period. In addition with westerly trough from Myanmar moved to cover the northern and upper northeastern parts of Thailand on December 27-29. These caused generally increasing temperature but still cool weather nearly the whole areas in upper Thailand and cold weather mainly in northern and northeastern parts. The lowest minimum temperature was 4.5 °C at Amphoe Thung Chang in Nan province on December 21 and 0.9 °C over the area of mountaintop at Ang Khang Royal Agricultural Station in Chiang Mai with the occurrence of frost at Doi Intanon in Chiang Mai on December 22. For rainfall, unusual rainfall was found in upper Thailand during the second half of the period especially fairly widespread to widespread rain with heavy rainfall in some areas on December 26-28. The highest daily rainfall in upper Thailand was 80.0 mm at Amphoe Mae Jarim in Nan province on December 27. In southern part, with the effects of the continuation of active northeast monsoon prevailing over the Gulf of Thailand and southern part almost the whole period and the covering of the low pressure cell which already weakened from the tropical storm “KAI-TAK” (1726) in the middle South China Sea and respectively downgraded to tropical depression and active low pressure cell on December 22 before moved to cover Malaysia and dissipated on December 24. Accompanied with the typhoon “TEMBIN” (1727) in the middle South China Sea downgraded to tropical storm in the afternoon of December 25 then moved pass southernmost cape Ca Mau and respectively weakened to tropical depression and low pressure cell before moving to cover the Gulf of Thailand in the evening of December 26,

with isolated to scattered rain during the first half of the period then fairly widespread to widespread rain with heavy to very heavy rainfall in some areas along east coast. The maximum daily rainfall was 155.0 mm at Ko Samui in Surat Thani province on December 30.

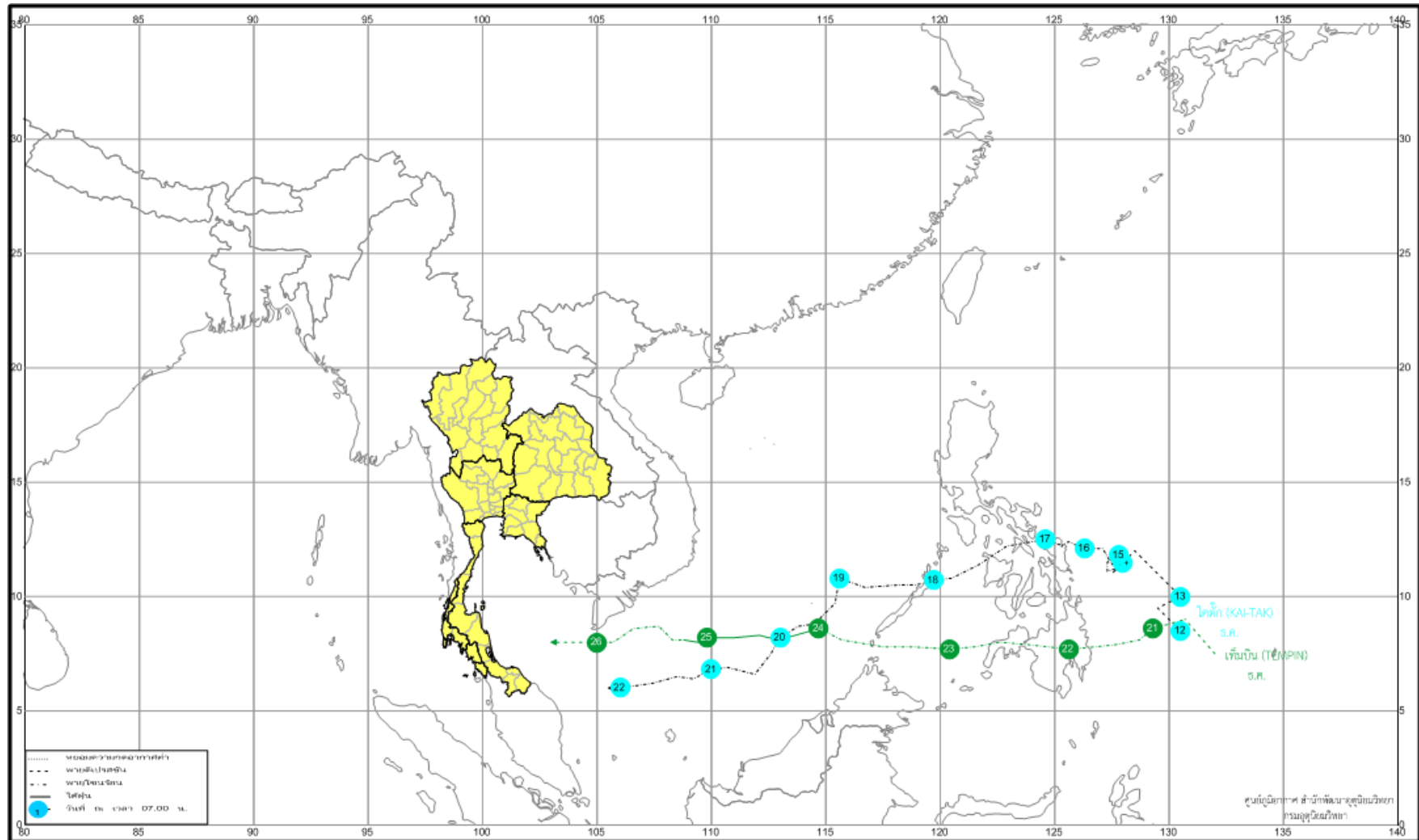
Note : 1) Rainfall, temperatures and natural disasters in this report were updated up to January 9, 2018.

Breaking records of the highest daily rainfall in December

Station	New Record 2017		Previous Record		Start since
	Rainfall (mm.)	Date	Rainfall (mm.)	Date / Year	
Chum Phon	250.3	5	208.8	30/1970	1952
Takua Pa (Phang-Nga)	142.5	7	61.5	5/1981	1981
Phuket	123.0	7	73.4	15/1984	1951
Southern Meteorological Center (West Coast)	108.1	7	107.3	31/2002	1952

Breaking records of daily minimum temperature in December

Station	New Record 2017		Previous Record		Start since
	Temperature(°C)	Date	Temperature(°C)	Date / Year	
Thoen (Lamphang)	8.2	21	9.7	18/2013	2004
Sukhothai	11.2	21	13.0	22/2003 9/2004 23/2006 23/2013	2000
Buriram	9.0	21	10.1	28/2013	2003
Krabi	18.0	21	18.5	12/2009 21/2015	1994



Track of tropical storms that affected on rainfall of Thailand in December 2017

Monthly Current Report
Rainfall and Accumulative Rainfall
December 2017

Northern Thailand

Station	Temperature (°c)		Rainfall (mm)		Accumulative rainfall (mm) Since 1 January	
	Mean	Above or below normal	Actual	Above or below normal	Actual	Above or below normal
Chiang Rai	20.7	1.3	106.4	92.4	2244.7	554.2
Mae Hong Son	21.6	0.7	22.4	12.0	1284.9	-7.5
Phayao	21.1	1.1	61.6	50.7	1305.2	168.2
Chiang Mai	23.2	1.8	20.4	4.5	1419.5	288.9
Tha Wang Pha	21.4	0.9	80.1	69.1	1467.4	59.3
Nan	22.4	1.4	37.2	28.6	1245.5	11.4
Lamphun	22.4	1.1	17.2	9.8	1495.4	491.6
Lampang	22.7	1.1	26.6	19.6	1541.4	495.9
Mae Sariang	22.3	1.4	4.8	-2.8	1254.0	118.2
Phrae	23.2	1.4	14.9	7.1	1413.7	298.9
Uttaradit	24.6	0.9	25.2	20.2	1552.1	180.5
Bhumibol Dam	23.2	0.5	15.3	8.1	1428.6	385.2
Tak	24.1	1.1	13.7	8.6	1421.6	360.5
Mae Sot	24.0	2.0	13.4	7.5	1105.2	-362.4
Umphang	21.5	1.7	2.8	-2.3	1385.5	-75.8
Phitsanulok	25.0	0.7	30.9	19.8	1620.8	303.8
Lom Sak	24.2	0.4	17.8	13.3	1309.5	266.4
Phetchabun	24.7	1.2	9.4	1.6	1376.2	242.8
Wichian Buri	25.1	0.3	13.7	9.4	1407.2	186.6
Kamphaeng Phet	24.9	0.8	25.8	19.1	1863.9	559.3
Over the area	23.1	1.1	28.0	19.8 241%	1457.1	226.2 18%

Northeastern Thailand

Station	Temperature (°c)		Rainfall (mm)		Accumulative rainfall (mm) Since 1 January	
	Mean	Above or below normal	Actual	Above or below normal	Actual	Above or below normal
Nong Khai	22.8	0.7	17.6	13.3	2089.1	480.9
Loei	22.1	1.0	24.7	16.0	1557.4	316.5
Udon Thani	22.8	0.4	12.6	9.7	1909.7	491.3
Nakhon Phanom	22.3	0.3	4.1	-0.7	2664.7	317.9
Sakon Nakhon	22.1	0.2	9.4	3.8	2422.9	777.9
Mukdahan	22.4	0.2	4.3	1.7	2056.8	576.8
Khon Kaen	23.3	0.3	6.3	2.2	1426.6	179.8
Kosum Phisai	23.6	0.1	4.2	1.1	1891.2	627.5
Roi Et	23.5	0.6	4.8	2.7	1759.1	417.1
Chaiyaphum	24.3	0.5	8.4	4.3	1252.5	115.3
Ubon Ratchathani	24.2	0.5	1.5	0.5	1794.8	213.1
Tha Tum	23.8	0.1	0.2	-0.8	1254.8	-133.1
Surin	24.1	0.5	1.5	-0.4	1512.0	79.8
Nakhon Ratchasima	24.4	0.8	10.5	7.8	1826.5	755.0
Chok Chai	24.0	0.4	10.9	7.7	1112.3	37.5
Nang Rong	23.7	0.1	7.9	4.5	1253.1	59.2
Over the area	23.3	0.4	8.1	4.6 131%	1736.5	332.0 24%

- NOTES :
- 1) Mean temperature is the average of daily dry-bulb temperature
 - 2) "T" is trace, rainfall amount less than 0.1 mm.
 - 3) "blank" is incomplete data.
 - 4) Temperature and rainfall are preliminary data.

Monthly Current Report
Rainfall and Accumulative Rainfal
December 2017

Central Thailand

Station	Temperature (°c)		Rainfall (mm)		Accumulative rainfall (mm) Since 1 January	
	Mean	Above or below normal	Actual	Above or below normal	Actual	Above or below normal
Nakhon Sawan	25.1	0.5	41.5	36.9	1760.5	610.8
Bua Chum	24.7	0.4	32.7	30.2	1319.8	234.5
Lop Buri	26.3	0.5	28.1	23.6	1282.4	157.3
Suphan Buri	25.5	0.5	31.9	25.2	1375.6	400.2
Thong Pha Phum	24.3	0.4	1.2	-3.5	1672.6	-113.9
Kanchanaburi	25.7	0.8	26.2	20.0	1230.5	174.1
Bangkok Airport	26.3	-0.1	14.8	8.7	1880.1	505.2
Bangkok Metropolis	26.6	0.1	52.5	46.2	2669.9	1021.7
Over the area	25.6	0.4	28.6	23.4 450%	1648.9	373.7 29%

Eastern Thailand

Station	Temperature (°c)		Rainfall (mm)		Accumulative rainfall (mm) Since 1 January	
	Mean	Above or below normal	Actual	Above or below normal	Actual	Above or below normal
Prachin Buri	26.7	0.5	6.0	1.0	1895.3	72.0
Kabin Buri	25.5	-0.1	7.2	3.3	2027.7	430.9
Aranyaprathet	26.0	0.7	7.8	3.0	1523.8	179.0
Chon Buri	26.7	0.2	8.7	3.2	1462.6	167.0
Ko Sichang	26.0	-0.2	29.1	20.6	1272.1	53.2
Pattaya	25.9	0.0	29.8	21.5	1310.0	199.3
Sattahip	25.6	-0.4	24.2	13.7	1673.1	406.5
Rayong	26.0	0.0	11.6	5.7	1661.1	277.9
Chanthaburi	26.2	0.2	13.8	7.0	3681.6	687.4
Khlong Ya	27.0	0.2	46.5	25.2	4672.0	-173.8
Over the area	26.2	0.1	18.5	10.4 128%	2117.9	229.7 12%

- NOTES :
- 1) Mean temperature is the average of daily dry-bulb temperature
 - 2) "T" is trace, rainfall amount less than 0.1 mm.
 - 3) "blank" is incomplete data.
 - 4) Temperature and rainfall are preliminary data.

Monthly Current Report
Rainfall and Accumulative Rainfal
December 2017

Southern Thailand, east coast

Station	Temperature (°c)		Rainfall (mm)		Accumulative rainfall (mm) Since 1 January	
	Mean	Above or below normal	Actual	Above or below normal	Actual	Above or below normal
Phetchaburi	25.7	0.3	44.1	32.5	1500.1	512.8
Hua Hin	26.2	0.4	36.8	28.9	1381.1	426.0
Prachuap Khiri Khan	25.7	0.2	23.6	8.6	1491.9	400.1
Chumphon	25.5	0.2	370.6	247.3	2497.9	625.2
Surat Thani	25.7	0.2	143.0	13.6	1631.8	9.8
Ko Samui	26.6	0.0	318.7	108.4	2888.1	928.0
Nakhon Si Thammarat	25.9	0.2	607.5	155.8	4478.3	1981.8
Songkhla	26.7	-0.1	253.1	-191.6	3434.9	1368.2
Hat Yai Airport	26.1	0.5	166.7	-101.0	2508.1	781.8
Pattani Airport	26.1	0.2	303.5	-74.8	3095.2	1230.1
Narathiwat	26.0	0.1	679.3	113.7	4827.0	2366.3
Over the area	26.0	0.2	267.9	31.0 13%	2703.1	966.2 56%

Southern Thailand, west coast

Station	Temperature (°c)		Rainfall (mm)		Accumulative rainfall (mm) Since 1 January	
	Mean	Above or below normal	Actual	Above or below normal	Actual	Above or below normal
Ranong	26.3	0.0	84.9	39.4	4704.5	636.1
Takua Pa	26.8	0.4	216.4	154.7	4666.0	1008.4
Phuket	27.9	0.3	167.4	95.0	2775.7	556.2
Phuket Airport	27.3	0.6	189.1	121.7	3073.1	598.1
Ko Lanta	26.9	0.0	56.2	0.6	2733.7	557.1
Trang Airport	26.6	0.4	66.7	-58.7	3221.6	1073.1
Satun	27.4	0.4	76.4	-20.5	3039.0	749.1
Over the area	27.0	0.3	122.4	47.4 63%	3459.1	739.8 27%

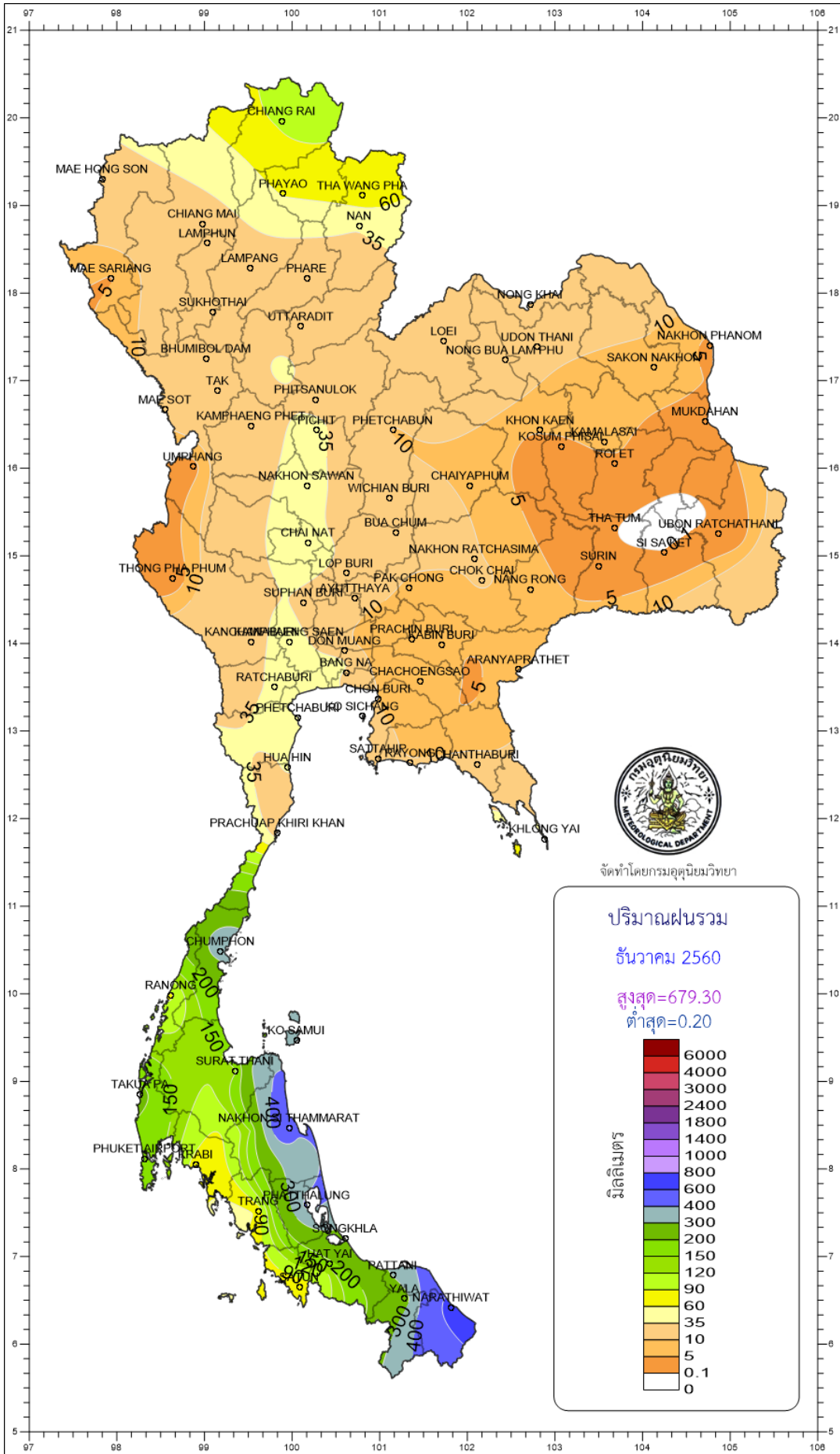
- NOTES :
- 1) Mean temperature is the average of daily dry-bulb temperature
 - 2) "T" is trace, rainfall amount less than 0.1 mm.
 - 3) "blank" is incomplete data.
 - 4) Temperature and rainfall are preliminary data.

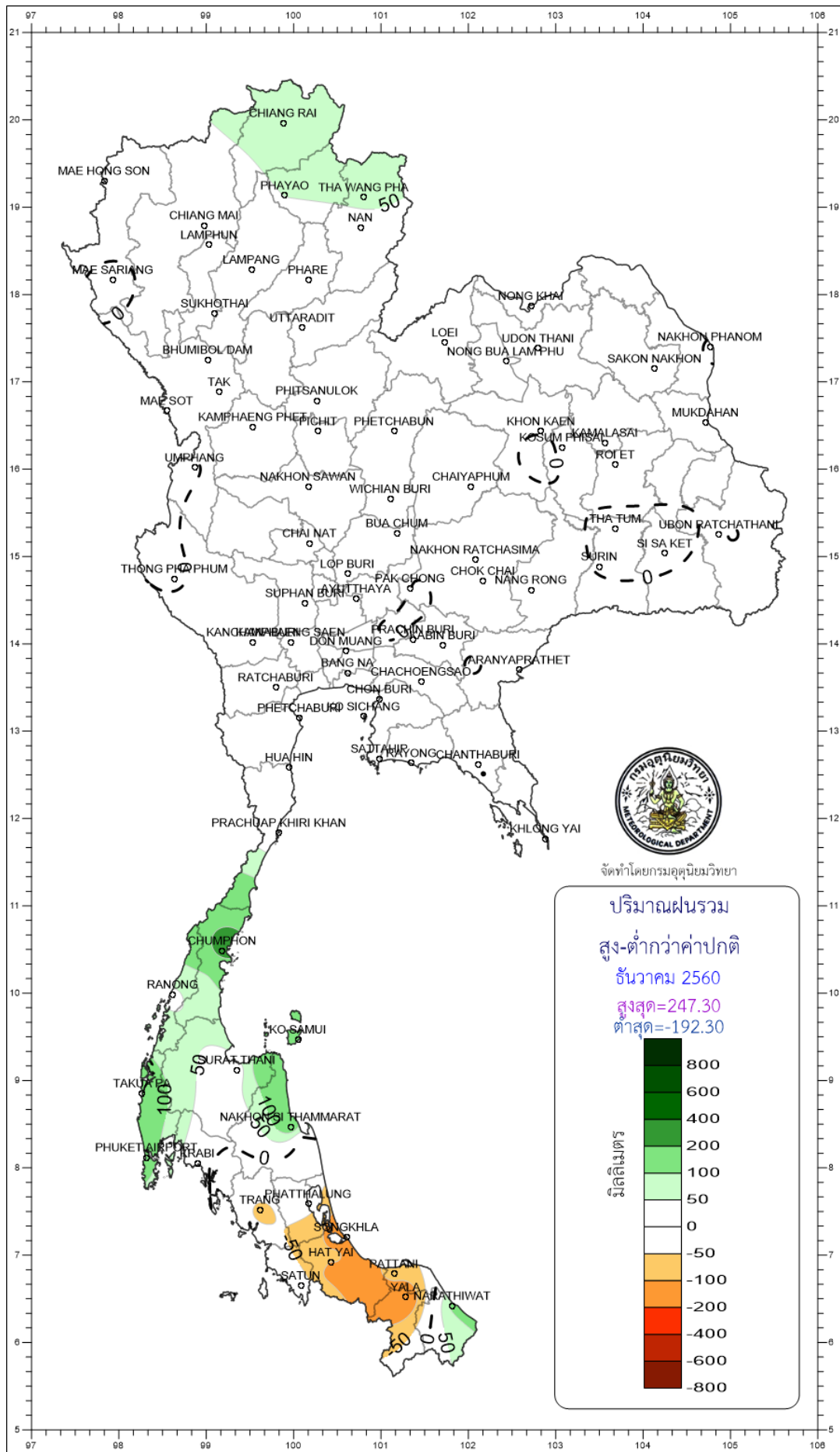
Monthly Current Report

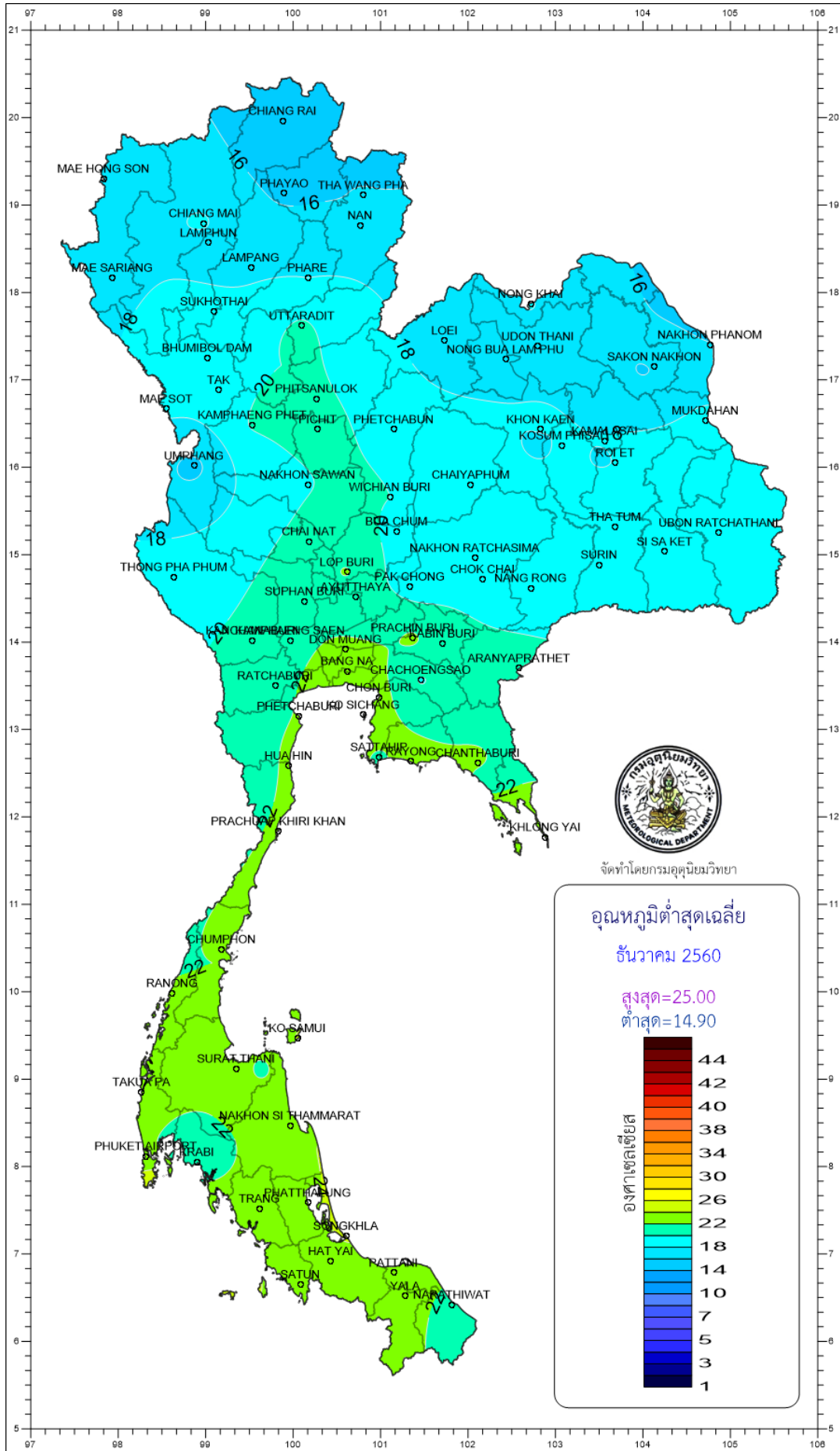
December 2017

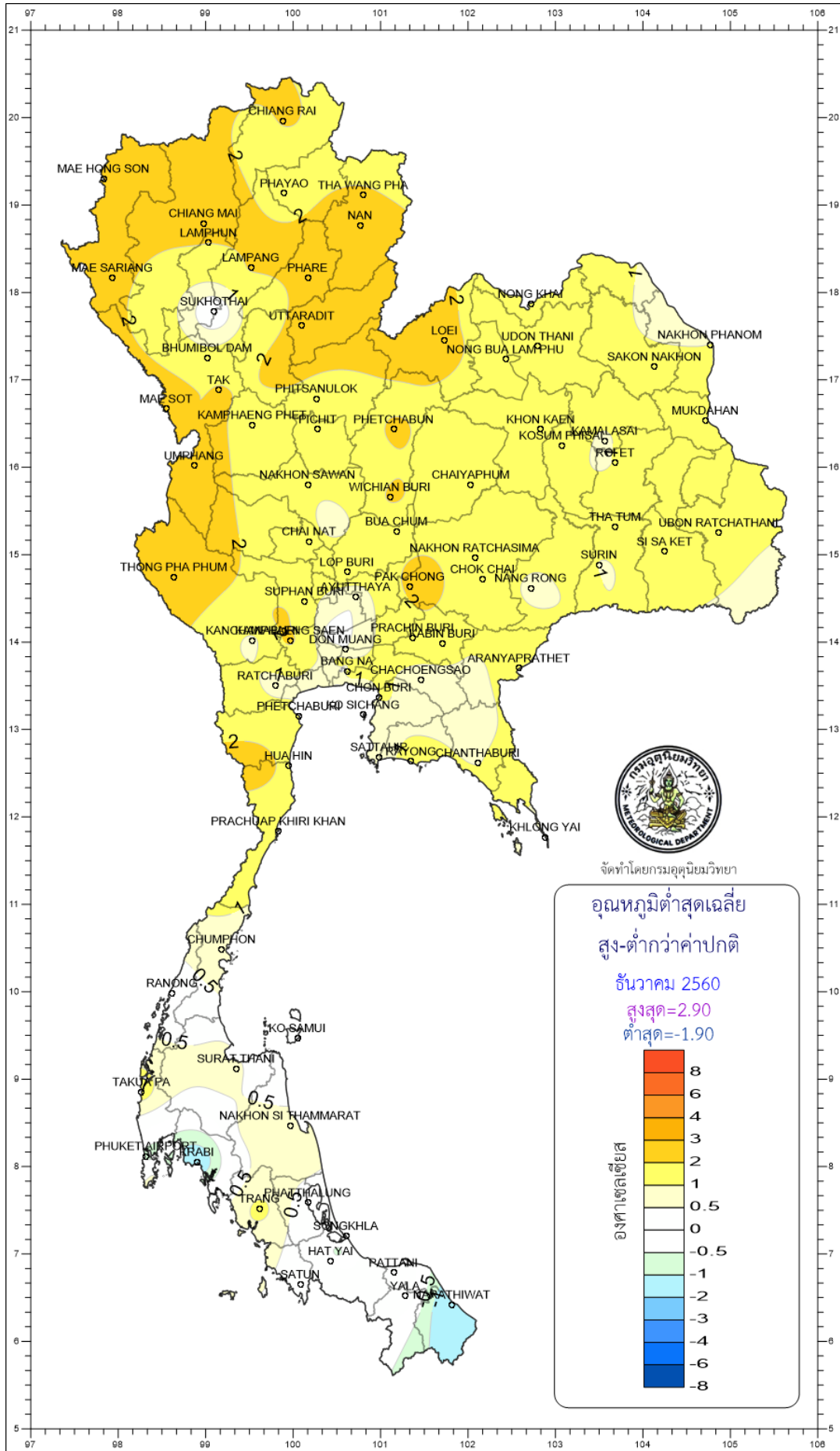
Region	Station	Temperature (°c)		Rainfall (mm)		Accumulative rainfall (mm Since 1 January	
		Mean	Above or below normal	Actual	Above or below normal	Actual	Above or below normal
North	Chiang Rai	20.7	1.3	106.4	92.4	2244.7	554.2
	Mae Hong Son	21.6	0.7	22.4	12.0	1284.9	-7.5
	Phayao	21.1	1.1	61.6	50.7	1305.2	168.2
	Chiang Mai	23.2	1.8	20.4	4.5	1419.5	288.9
	Tha Wang Pha	21.4	0.9	80.1	69.1	1467.4	59.3
	Nan	22.4	1.4	37.2	28.6	1245.5	11.4
	Lamphun	22.4	1.1	17.2	9.8	1495.4	491.6
	Lampang	22.7	1.1	26.6	19.6	1541.4	495.9
	Mae Sariang	22.3	1.4	4.8	-2.8	1254.0	118.2
	Phrae	23.2	1.4	14.9	7.1	1413.7	298.9
	Uttaradit	24.6	0.9	25.2	20.2	1552.1	180.5
	Bhumibol Dam	23.2	0.5	15.3	8.1	1428.6	385.2
	Tak	24.1	1.1	13.7	8.6	1421.6	360.5
	Mae Sot	24.0	2.0	13.4	7.5	1105.2	-362.4
	Umphang	21.5	1.7	2.8	-2.3	1385.5	-75.8
	Phitsanulok	25.0	0.7	30.9	19.8	1620.8	303.8
	Lom Sak	24.2	0.4	17.8	13.3	1309.5	266.4
Phetchabun	24.7	1.2	9.4	1.6	1376.2	242.8	
Wichian Buri	25.1	0.3	13.7	9.4	1407.2	186.6	
Kamphaeng Phet	24.9	0.8	25.8	19.1	1863.9	559.3	
Northeast	Nong Khai	22.8	0.7	17.6	13.3	2089.1	480.9
	Loei	22.1	1.0	24.7	16.0	1557.4	316.5
	Udon Thani	22.8	0.4	12.6	9.7	1909.7	491.3
	Nakhon Phanom	22.3	0.3	4.1	-0.7	2664.7	317.9
	Sakon Nakhon	22.1	0.2	9.4	3.8	2422.9	777.9
	Mukdahan	22.4	0.2	4.3	1.7	2056.8	576.8
	Khon Kaen	23.3	0.3	6.3	2.2	1426.6	179.8
	Kosum Phisai	23.6	0.1	4.2	1.1	1891.2	627.5
	Roi Et	23.5	0.6	4.8	2.7	1759.1	417.1
	Chaiyaphum	24.3	0.5	8.4	4.3	1252.5	115.3
	Ubon Ratchathani	24.2	0.5	1.5	0.5	1794.8	213.1
	Tha Tum	23.8	0.1	0.2	-0.8	1254.8	-133.1
	Surin	24.1	0.5	1.5	-0.4	1512.0	79.8
Nakhon Ratchasima	24.4	0.8	10.5	7.8	1826.5	755.0	
Chok Chai	24.0	0.4	10.9	7.7	1112.3	37.5	
Nang Rong	23.7	0.1	7.9	4.5	1253.1	59.2	
Central	Nakhon Sawan	25.1	0.5	41.5	36.9	1760.5	610.8
	Bua Chum	24.7	0.4	32.7	30.2	1319.8	234.5
	Lop Buri	26.3	0.5	28.1	23.6	1282.4	157.3
	Suphan Buri	25.5	0.5	31.9	25.2	1375.6	400.2
	Thong Pha Phum	24.3	0.4	1.2	-3.5	1672.6	-113.9
	Kanchanaburi	25.7	0.8	26.2	20.0	1230.5	174.1
	Bangkok Airport	26.3	-0.1	14.8	8.7	1880.1	505.2
	Bangkok Metropolis	26.6	0.1	52.5	46.2	2669.9	1021.7
East	Prachin Buri	26.7	0.5	6.0	1.0	1895.3	72.0
	Kabin Buri	25.5	-0.1	7.2	3.3	2027.7	430.9
	Aranyaprathet	26.0	0.7	7.8	3.0	1523.8	179.0
	Chon Buri	26.7	0.2	8.7	3.2	1462.6	167.0
	Ko Sichang	26.0	-0.2	29.1	20.6	1272.1	53.2
	Pattaya	25.9	0.0	29.8	21.5	1310.0	199.3
	Sattahip	25.6	-0.4	24.2	13.7	1673.1	406.5
	Rayong	26.0	0.0	11.6	5.7	1661.1	277.9
	Chanthaburi	26.2	0.2	13.8	7.0	3681.6	687.4
Khlung Yai	27.0	0.2	46.5	25.2	4672.0	-173.8	
South (East Coast)	Phetchaburi	25.7	0.3	44.1	32.5	1500.1	512.8
	Hua Hin	26.2	0.4	36.8	28.9	1381.1	426.0
	Prachuap Khiri Khan	25.7	0.2	23.6	8.6	1491.9	400.1
	Chumphon	25.5	0.2	370.6	247.3	2497.9	625.2
	Surat Thani	25.7	0.2	143.0	13.6	1631.8	9.8
	Ko Samui	26.6	0.0	318.7	108.4	2888.1	928.0
	Nakhon Si Thammarat	25.9	0.2	607.5	155.8	4478.3	1981.8
	Songkhla	26.7	-0.1	253.1	-191.6	3434.9	1368.2
	Hat Yai Airport	26.1	0.5	166.7	-101.0	2508.1	781.8
	Pattani Airport	26.1	0.2	303.5	-74.8	3095.2	1230.1
Narathiwat	26.0	0.1	679.3	113.7	4827.0	2366.3	
South (West Coast)	Ranong	26.3	0.0	84.9	39.4	4704.5	636.1
	Takua Pa	26.8	0.4	216.4	154.7	4666.0	1008.4
	Phuket	27.9	0.3	167.4	95.0	2775.7	556.2
	Phuket Airport	27.3	0.6	189.1	121.7	3073.1	598.1
	Ko Lanta	26.9	0.0	56.2	0.6	2733.7	557.1
	Trang Airport	26.6	0.4	66.7	-58.7	3221.6	1073.1
	Satun	27.4	0.4	76.4	-20.5	3039.0	749.1
	Over the area	24.7	0.5	68.1	19.9	2017.3	429.6
					41%		27%

NOTES : 1) Mean temperature is the average of daily dry-bulb temperature
2) "T" is trace, rainfall amount less than 0.1 mm.
3) "blank" is incomplete data.
4) Temperature and rainfall are preliminary data.









จัดทำโดยกรมอุตุนิยมวิทยา

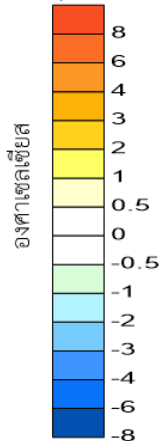
อุณหภูมิต่ำสุดเฉลี่ย

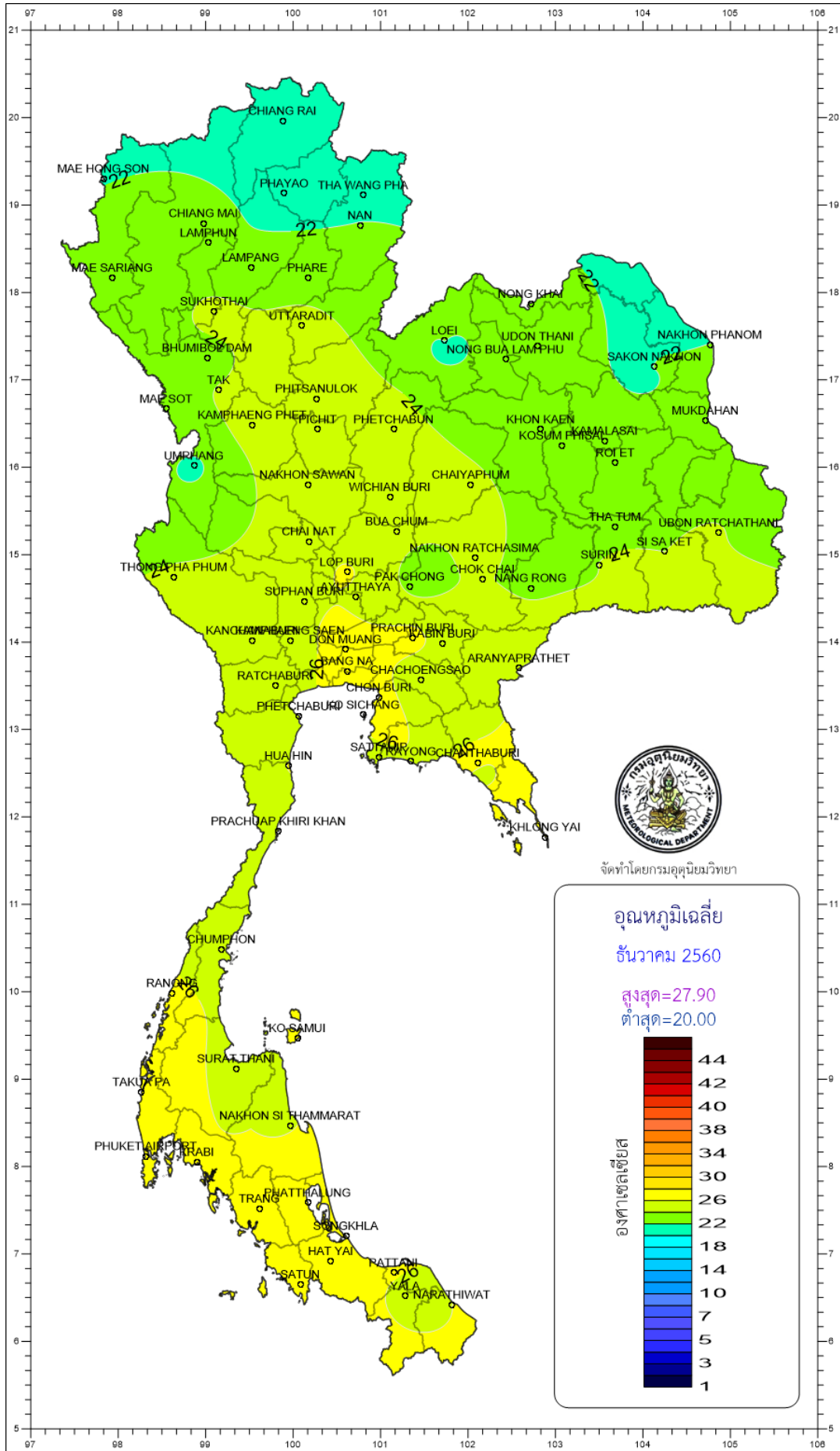
สูง-ต่ำกว่าค่าปกติ

ธันวาคม 2560

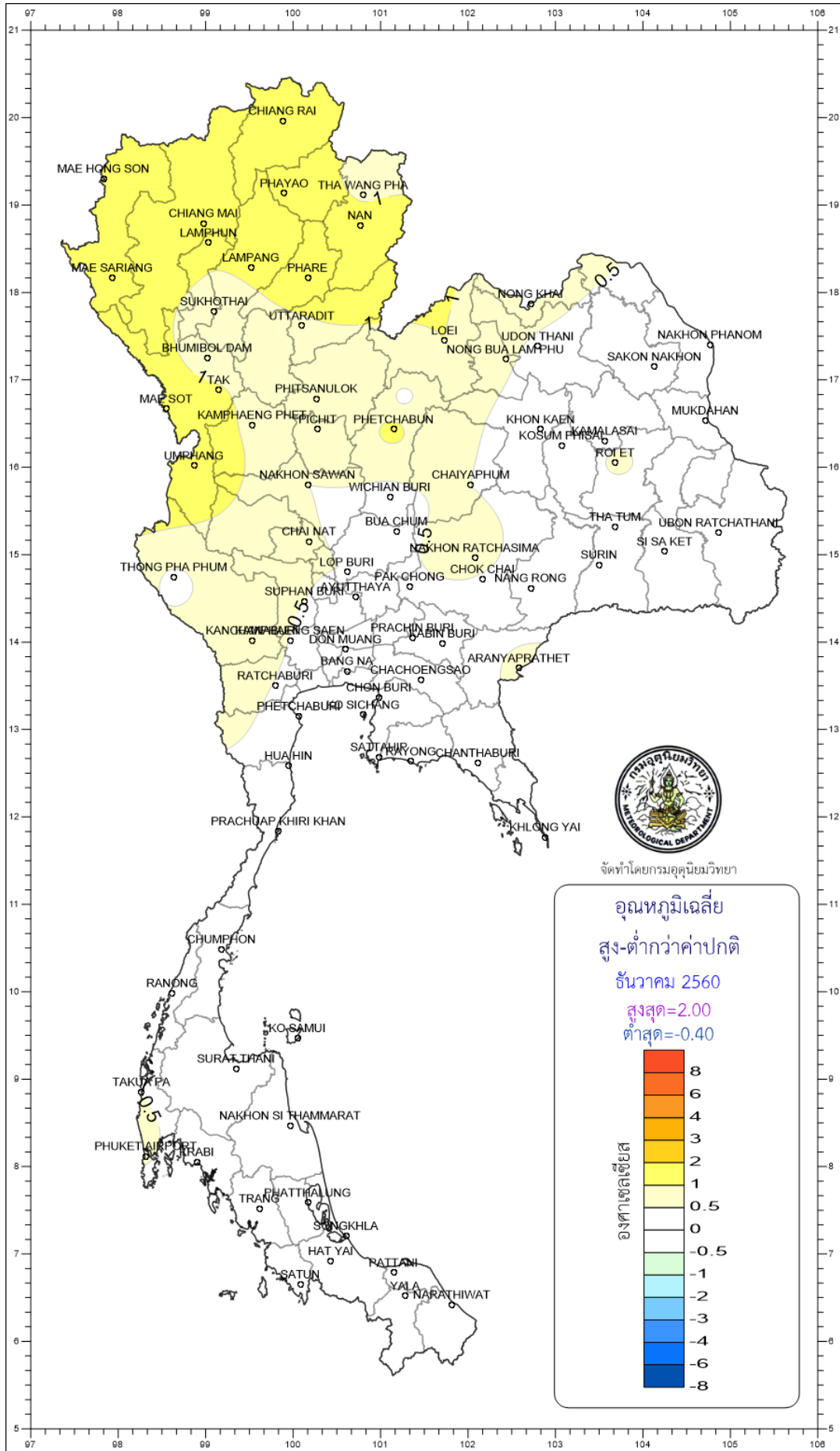
สูงสุด=2.90

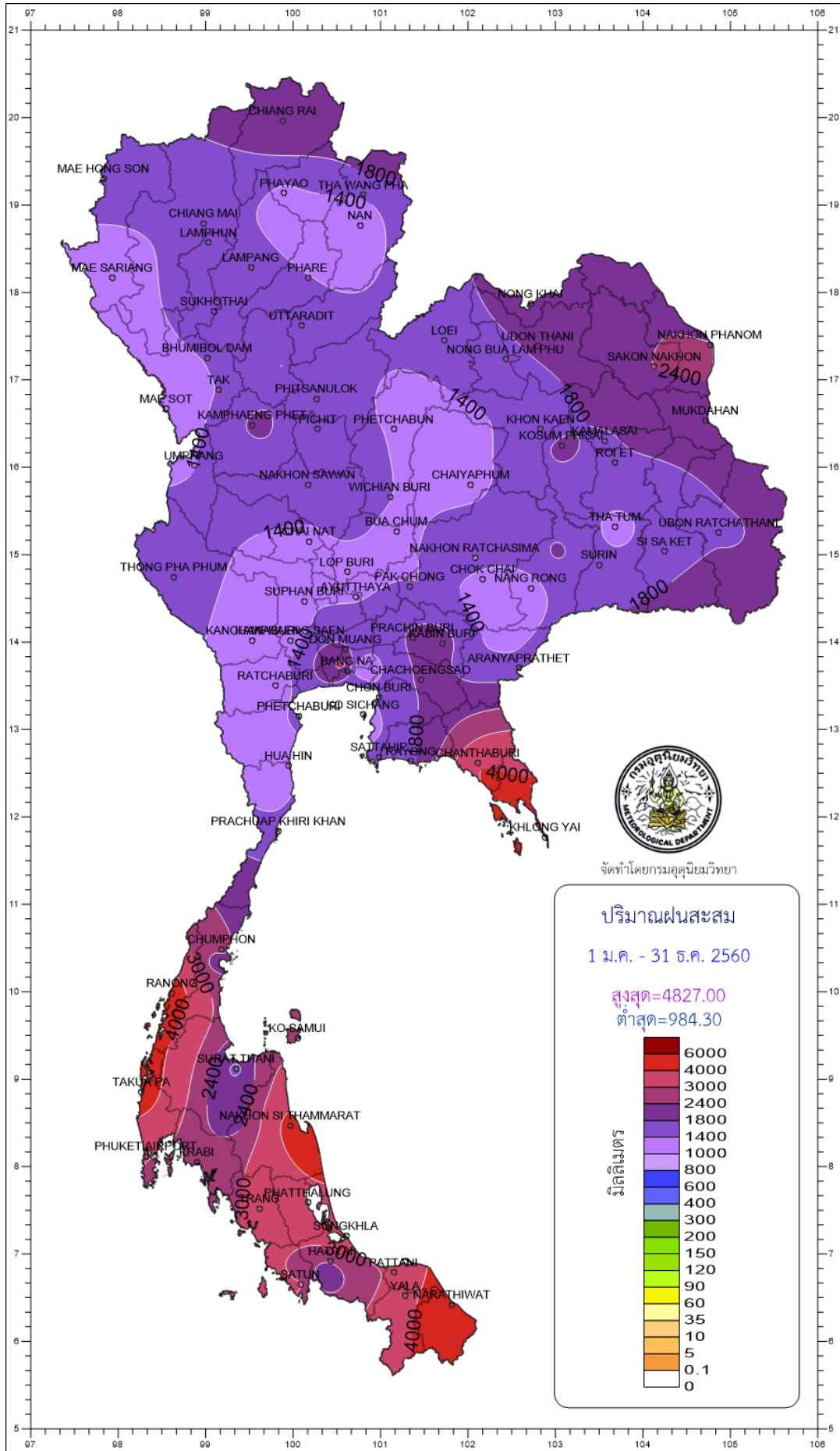
ต่ำสุด=-1.90

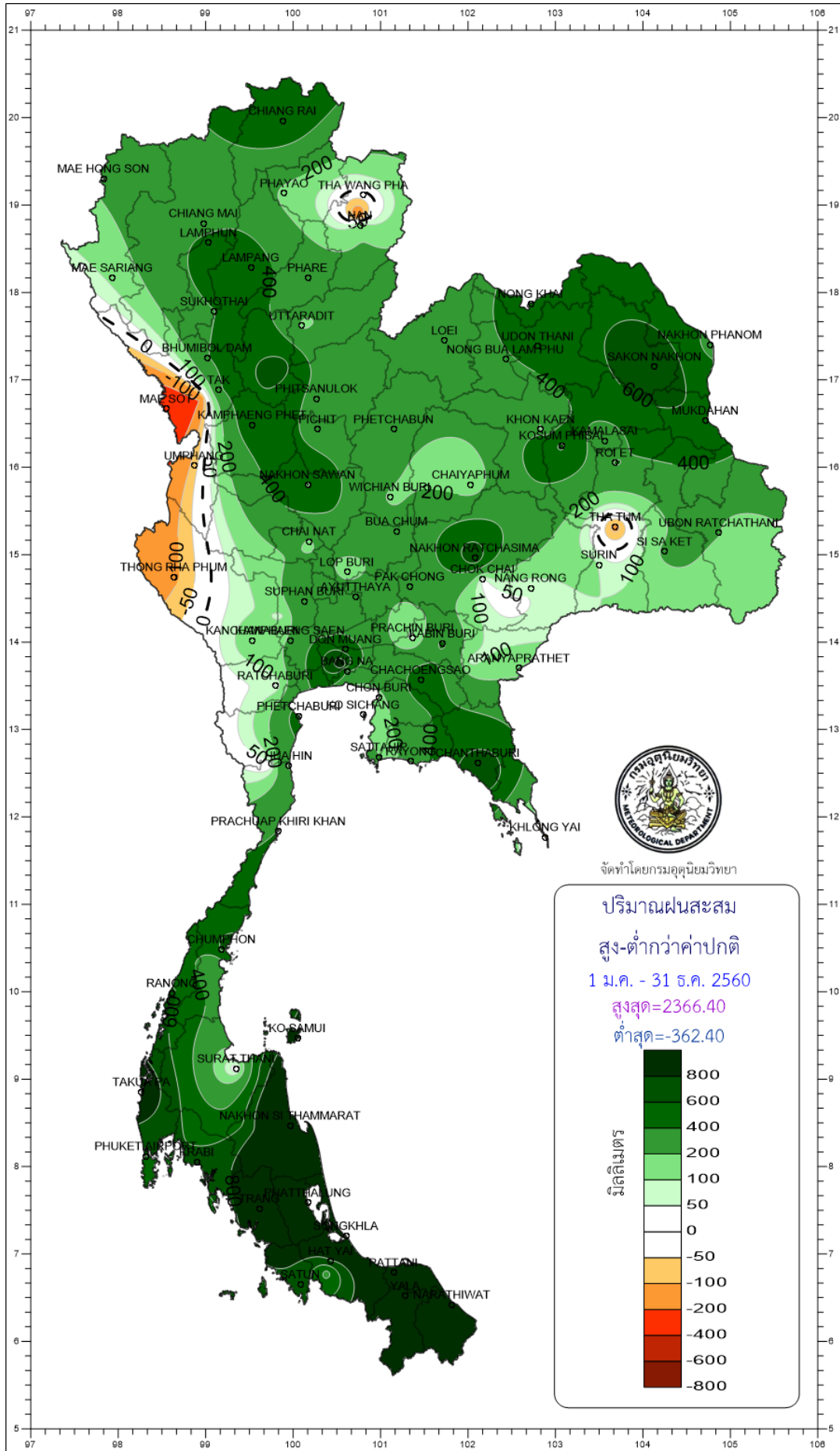




จัดทำโดยกรมอุตุนิยมวิทยา







จัดทำโดยกรมอุตุนิยมวิทยา